

ARKISTONE Series

PORCELAIN

alphatile & stone 
a division of olympiatile+stone

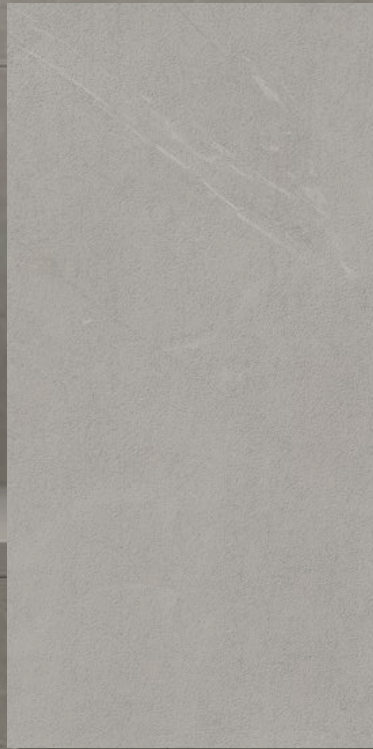


ARKISTONE Series

Available Colors



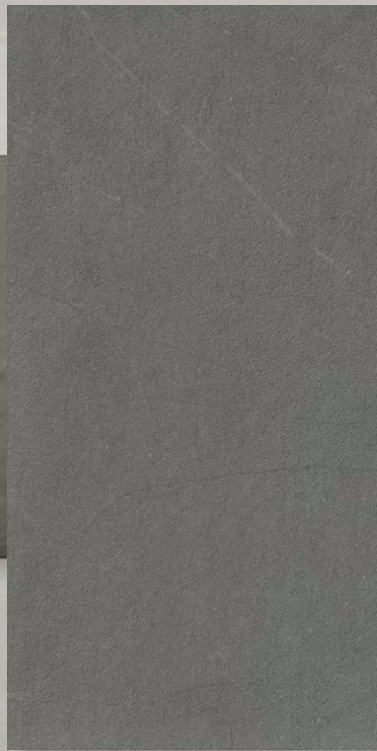
IVORY



LIGHT (Light Grey)



GRIEGE (Taupe)



SILVER



DARK (Dark Grey)

ARKISTONE Series

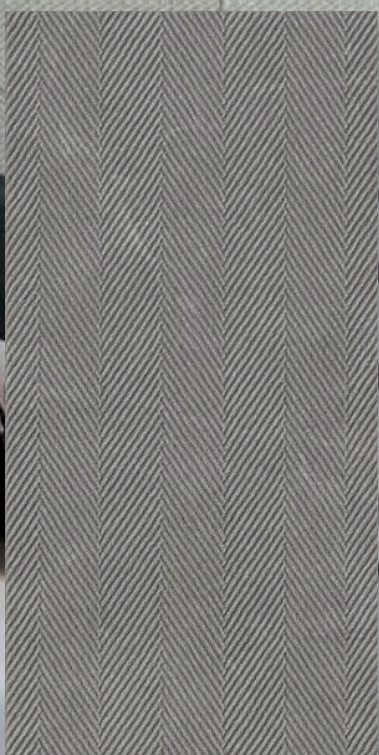
Available Decors



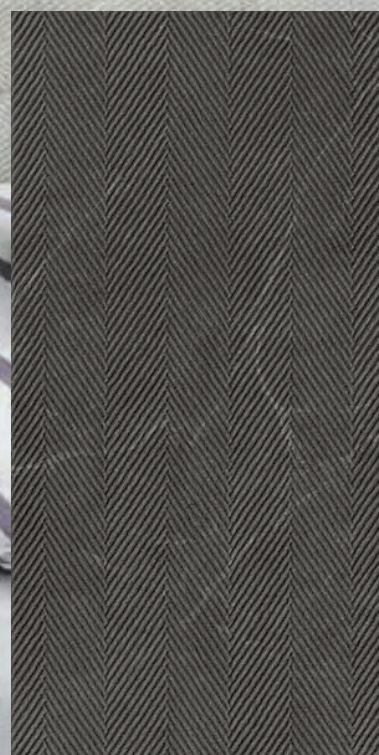
LIGHT (Light Grey)



GRIEGE (Taupe)



SILVER



DARK (Dark Grey)

Available Sizes

Colored Body Porcelain
Rectified
Matte



30x60 cm
(11.81"x23.622")
Tile and Decor



60x60 cm
(23.622"x23.622")
Tile Only



60x120 cm
(23.622"x47.208")
Tile Only

alphatile & stone 
a division of olympiatile+stone

ARKISTONE Series

Colored Body Porcelain
Matte, Rectified

IVORY

12" x 24" MC.AK.IVO.1224.MT

24" x 24" MC.AK.IVO.2424.MT

24" x 48" MC.AK.IVO.2448.MT

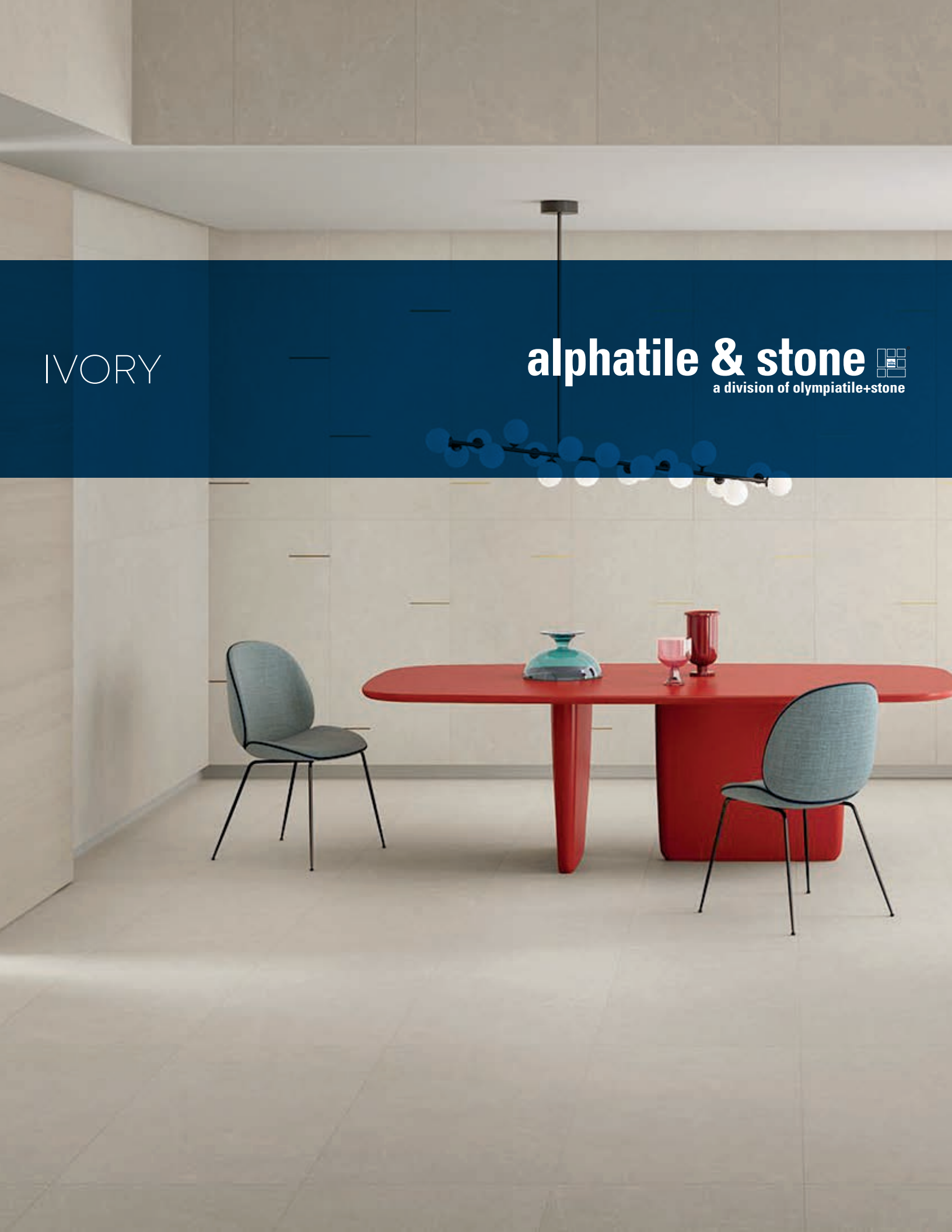


Not all items shown in this document are part of Alpha's stocking program and are pulled from Olympia Tile. For special orders, please contact your Alpha Tile Sales Representative.

alphatiles & stone 
a division of olympiatile+stone

IVORY

alphatile & stone 
a division of olympiatile+stone



ARKISTONE Series

Colored Body Porcelain
Matte, Rectified

LIGHT (Light Grey)

12" x 24" MC.AK.LHT.1224.MT

24" x 24" MC.AK.LHT.2424.MT

24" x 48" MC.AK.LHT.2448.MT



Not all items shown in this document are part of Alpha's stocking program and are pulled from Olympia Tile. For special orders, please contact your Alpha Tile Sales Representative.

alphatiles & stone 
a division of olympiatile+stone

LIGHT

alphatile & stone 
a division of olympiatile+stone



ARKISTONE Series

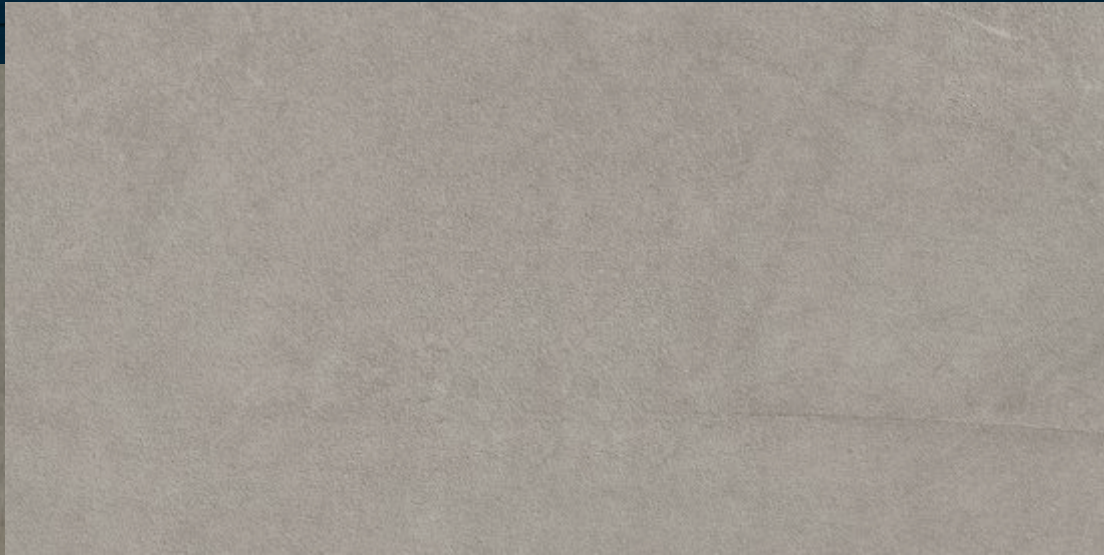
Colored Body Porcelain
Matte, Rectified

GRIEGE (Taupe)

12" x 24" MC.AK.GRE.1224.MT

24" x 24" MC.AK.GRE.2424.MT

24" x 48" MC.AK.GRE.2448.MT



Not all items shown in this document are part of Alpha's stocking program and are pulled from Olympia Tile. For special orders, please contact your Alpha Tile Sales Representative.

alphatiles & stone 
a division of olympiatile+stone

GREIGE

alphatile & stone 
a division of olympiatile+stone



ARKISTONE Series

Colored Body Porcelain
Matte, Rectified

SILVER

12" x 24" MC.AK.SIL.1224.MT

24" x 24" MC.AK.SIL.2424.MT

24" x 48" MC.AK.SIL.2448.MT



Not all items shown in this document are part of Alpha's stocking program and are pulled from Olympia Tile. For special orders, please contact your Alpha Tile Sales Representative.

alphatile & stone 
a division of olympiatile+stone

SILVER

alphatile & stone 
a division of olympiatile+stone



ARKISTONE Series

Colored Body Porcelain
Matte, Rectified

DARK (Dark Grey)

12" x 24" MC.AK.DRK.1224.MT

24" x 24" MC.AK.DRK.2424.MT

24" x 48" MC.AK.DRK.2448.MT



Not all items shown in this document are part of Alpha's stocking program and are pulled from Olympia Tile. For special orders, please contact your Alpha Tile Sales Representative.

alphatiles & stone 
a division of olympiatile+stone

DARK

alphatile & stone 
a division of olympiatile+stone

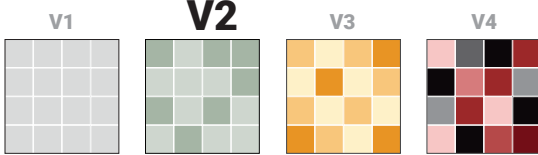


DECOR

alphatile & stone 
a division of olympiatile+stone



Color Variation



Member



Member of Canada
Green Building
Council



Member of U.S.
Green Building
Council



The Terrazzo, Tile, and
Marble Association of
Canada



Ceramic Tile
Distributors of
America (CTDA)



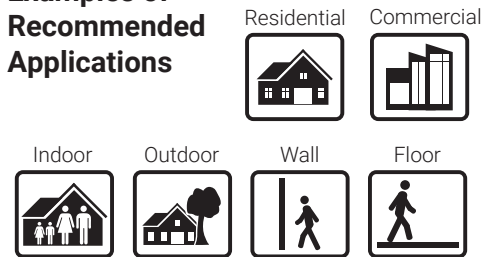
Marble Institute
of America

For information concerning LEED, please
contact our Sales Representative

Packing Details

TILE SIZE	PC/BOX	SF/BOX	LB/BOX	BOX/PAL
12"x24" Tile and Decor (Matte)	7	13.56	57.33	40
24" x 24" Matte	3	11.62	49.50	40
24" x 48" Matte	2	15.50	65.70	35

Examples of Recommended Applications



"MORE" Surface Care Product Guide

Task	Product Recommendation	Dilution with Water	Frequency
Grout Sealing	MORE™ Grout, Ceramic & Porcelain Sealer	Ready to use	Commercial: 1-3 Years Residential: 5-8 Years
Daily Maintenance	MORE™ Stone and Tile Cleaner	1 : 128 Ratio	Daily
Deep Cleaning	MORE™ Alkaline Cleaner	1 : 4 Ratio	As Needed
Grout Haze- Cementitious	MORE™ Acidic Cleaner	1 : 4 Ratio	As Needed
Grout Haze - Epoxy / Urethane	MORE™ Coating Stripper*	Ready to use	As Needed

*Always test in an inconspicuous area to make sure the product is achieving the desired results and is not damaging the finish of the surface.

alphatile & stone
a division of olympiatile+stone

Tampa

2443 East Meadow Blvd.
Tampa, FL 33619
(813) 620-9000
(800) 785-9000

Fort Myers

10898-A Metro Parkway
Ft. Myers, FL 33966
(239) 275-8288
(800) 785-8288

Sarasota

1808 Whitfield Ave.
Sarasota, FL 34243
(941) 727-7433
(800) 785-3484



www.alphatile.com