

CRAFT Series

PORCELAIN

alphatile & stone 
a division of olympiatile+stone



CRAFT Series

Available Colors



COTTON



YARN



ROPE



WOOL



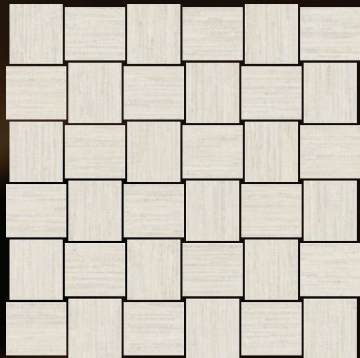
QUILT

Available Options

BASKETWEAVE 12X12

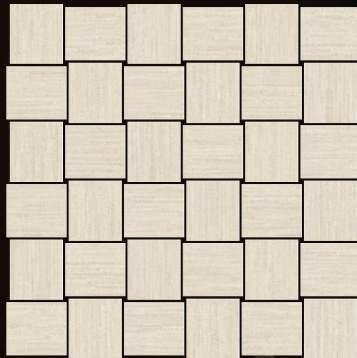
HERRINGBONE 10X24

COTTON



PAN BASK CRCO

YARN



PAN BASK CRYA

ROPE



PAN BASK CRRO

WOOL



PAN BASK CRWO



PAN HER CRCO



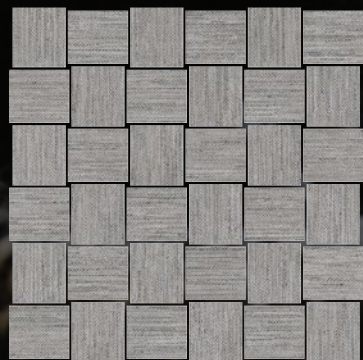
PAN HER CRYA



PAN HER CRRO



PAN HER CRWO



QUILT

PAN BASK CRQU



PAN HER CRQU

3X12 BULLNOSE RECT

- COTTON PAN 3X12BN CRCO
- YARN PAN 3X12BN CRYA
- ROPE PAN 3X12BN CRRO
- WOOL PAN 3X12BN CRWO
- QUILT PAN 3X12BN CRQU



CRAFT Series

Colored Body
Glazed Stoneware
Rectified

COTTON
12 x 24 PAN 12X24 CRCO
24 x 24 PAN 24X24 CRCO
8x 24 PAN 8X24 CRCO

Antimicrobial Surface
with MICROBAN



Not all items shown in this document are part of Alpha's stocking program, but are available on a special order basis from the factory. For special orders, please contact your Alpha Tile Sales Representative.

alphatiles & stone 
a division of olympiatile+stone



COTTON

alphatile & stone 
a division of olympiatile+stone

CRAFT Series

Colored Body
Glazed Stoneware
Rectified

YARN

12 x 24 PAN 12X24 CRYA
24 x 24 PAN 24X24 CRYA
8 x 24 PAN 8X24 CRYA

Antimicrobial Surface
with MICROBAN



Not all items shown in this document are part of Alpha's stocking program, but are available on a special order basis from the factory. For special orders, please contact your Alpha Tile Sales Representative.

alphatiles & stone 
a division of olympiatile+stone



alphatile & stone 
a division of olympiatile-stone

CRAFT Series

Colored Body
Glazed Stoneware
Rectified

ROPE

12 x 24	PAN 12X24 CRRO
24 x 24	PAN 24X24 CRRO
8 x 24	PAN 8X24 CRRO

Antimicrobial Surface
with MICROBAN



Not all items shown in this document are part of Alpha's stocking program, but are available on a special order basis from the factory. For special orders, please contact your Alpha Tile Sales Representative.

alphatiles & stone 
a division of olympiatile+stone

ROPE

alphatile & stone 
a division of olympiatile-stone



CRAFT Series

Colored Body
Glazed Stoneware
Rectified

WOOL

12 x 24 PAN 12X24 CRWO
24 x 24 PAN 24X24 CRWO
8 x 24 PAN 8X24 CRWO

Antimicrobial Surface
with MICROBAN



Not all items shown in this document are part of Alpha's stocking program, but are available on a special order basis from the factory. For special orders, please contact your Alpha Tile Sales Representative.

alphatiles & stone 
a division of olympiatile+stone

WOOL

alphatile & stone 
a division of olympiatile+stone



CRAFT Series

Colored Body
Glazed Stoneware
Rectified

QUILT

12 x 24	PAN 12X24 CRQU
24 x 24	PAN 24X24 CRQU
8 x 24	PAN 8X24 CRQU

Antimicrobial Surface
with MICROBAN



Not all items shown in this document are part of Alpha's stocking program, but are available on a special order basis from the factory. For special orders, please contact your Alpha Tile Sales Representative.

alphatiles & stone 
a division of olympiatile+stone

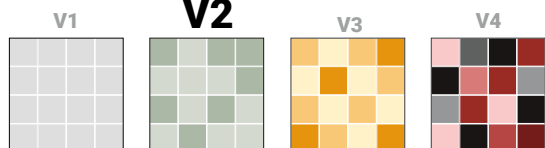
QUILT

alphatile & stone 
a division of olympiatile+stone



Color Variation

Member



Member of Canada
Green Building
Council



Member of U.S.
Green Building
Council



The Terrazzo, Tile, and
Marble Association of
Canada



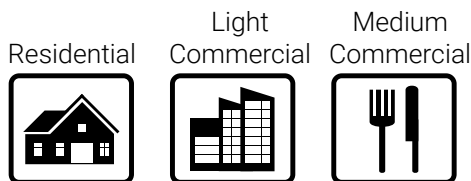
Ceramic Tile
Distributors of
America (CTDA)



Marble Institute
of America

For information concerning LEED, please
contact our Sales Representative

Examples of Recommended Applications



Packing Details

TILE SIZE	PC/BOX	SF/BOX	LB/BOX	BOX/PAL
12" x 24"	7	13.67	62.83	32
24" x 24"	4	15.61	71.65	32
8" x 24"	9	11.95	53.57	N/A
HERRINGBONE 10X24	6	5.54	27.60	N/A
BASKETWEAVE 12X12	5	4.84	20.67	N/A
3X12 BULLNOSE RECT	18	N/A	18.78	N/A















"MORE" Surface Care Product Guide

Task	Product Recommendation	Dilution with Water	Frequency
Grout Sealing	MORE™ Grout, Ceramic & Porcelain Sealer	Ready to use	Commercial: 1-3 Years Residential: 5-8 Years
Daily Maintenance	MORE™ Stone and Tile Cleaner	1 : 128 Ratio	Daily
Deep Cleaning	MORE™ Alkaline Cleaner	1 : 4 Ratio	As Needed
Grout Haze- Cementitious	MORE™ Acidic Cleaner	1 : 4 Ratio	As Needed
Grout Haze - Epoxy / Urethane	MORE™ Coating Stripper*	Ready to use	As Needed

*Always test in an inconspicuous area to make sure the product is achieving the desired results and is not damaging the finish of the surface.

TECHNICAL FEATURES

Coloured-body glazed stoneware _ According to ANSI A 137.1 (Glazed Porcelain Tiles - P1 Class)

	TECHNICAL FEATURES	TEST METHOD ASTM	REQUIRED VALUES ANSI A 137.1	CRAFT SERIES VALUES
	WATER ABSORPTION	ASTM C373	≤ 0.5%	CONFORMS
	BREAKING STRENGTH	ASTM C648	≥ 250 lbf	425 lbf
	RESISTANCE TO SURFACE ABRASION	ASTM C1027	AS INDICATED BY MANUFACTURER	5: COTTON - YARN - ROPE - WOOL 4: QUILT
	LINEAR THERMAL EXPANSION	ASTM C372	NO PROVISION	$\alpha \leq 8 \times 10^{-6} \text{ } ^\circ\text{C}^{-1}$ $\alpha \leq 4.4 \times 10^{-6} \text{ } ^\circ\text{F}^{-1}$
	STAIN RESISTANCE	ASTM C1378	AS INDICATED BY MANUFACTURER	A RESISTANT
	CHEMICAL RESISTANCE	ASTM C650	AS INDICATED BY MANUFACTURER	A RESISTANT(*)
	FROST RESISTANCE	ASTM C1026	AS INDICATED BY MANUFACTURER	RESISTANT
	BOND STRENGTH	ASTM C482	≥ 50 PSI	CONFORMS
	SLIP RESISTANCE	ANSI A 137.1 BOT 3000	DCOF ≥ 0.42	≥ 0.42
	SHADE VARIATION	ANSI A 137.1	AS INDICATED BY MANUFACTURER	V2 SLIGHT VARIATION
	MINIMUM JOINT	RECT	-	2 MM
	THICKNESS	SIZES 24" X24" - 60X60 CM 12" X24" - 30X60 CM 8" X24" - 20X60 CM	-	10 MM

(*) No Hydrofluoric acid and its derivatives

Technical data is supplied by the manufacturer and is subject to change at any time. Olympia or Alpha does not provide warranties as to the specifications of any product.

alphatile & stone 
a division of olympiatile+stone

Tampa

2443 East Meadow Blvd.
Tampa, FL 33619
(813) 620-9000
(800) 785-9000

Fort Myers

10898-A Metro Parkway
Ft. Myers, FL 33966
(239) 275-8288
(800) 785-8288

Sarasota

1808 Whitfield Ave.
Sarasota, FL 34243
(941) 727-7433
(800) 785-3484

Orlando

2603 Ace Road
Orlando, FL 32804
(407) 293-3993
(800) 785-3993



www.alphatile.com