

NOLITA Series

PORCELAIN

alphatile & stone 
a division of olympiatile+stone



NOLITA Series

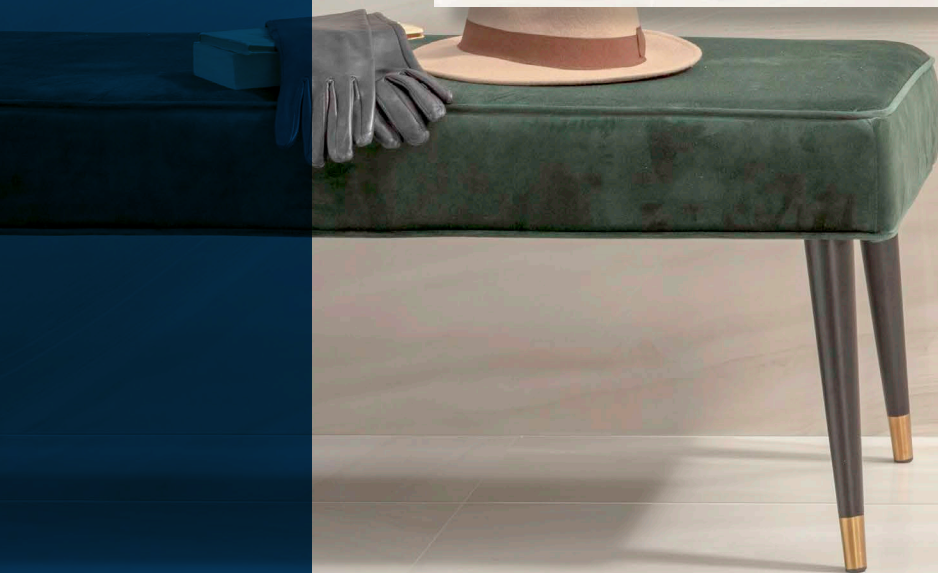
Available Colors



BLANCO (White)



AMBRA (Cream)

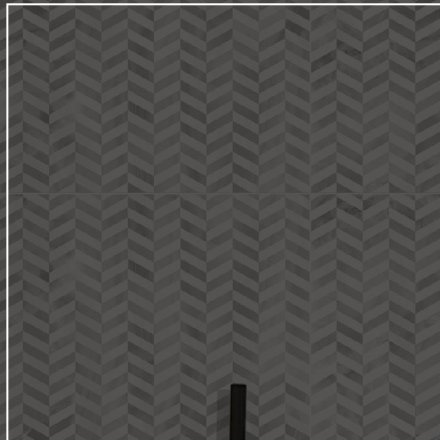


Available Options

Colored Body Porcelain
Honed & Polished



30 x 60 cm
(11.5" x 23.6")
Honed
Rectified



60 x 60 cm
(23.6" x 23.6")
Tile & Decor (Simila & Milano)
Honed - Rectified



60 x 120 cm
(23.6" x 47.2")
Polished
Rectified



alphatile & stone 
a division of olympiatile-stone

NOLITA Series

Colored Body Porcelain
Rectified

BIANCO (White)

Honed

12" x 24" VN.NL.BIA.1224.HN

24" x 24" VN.NL.BIA.2424.HN

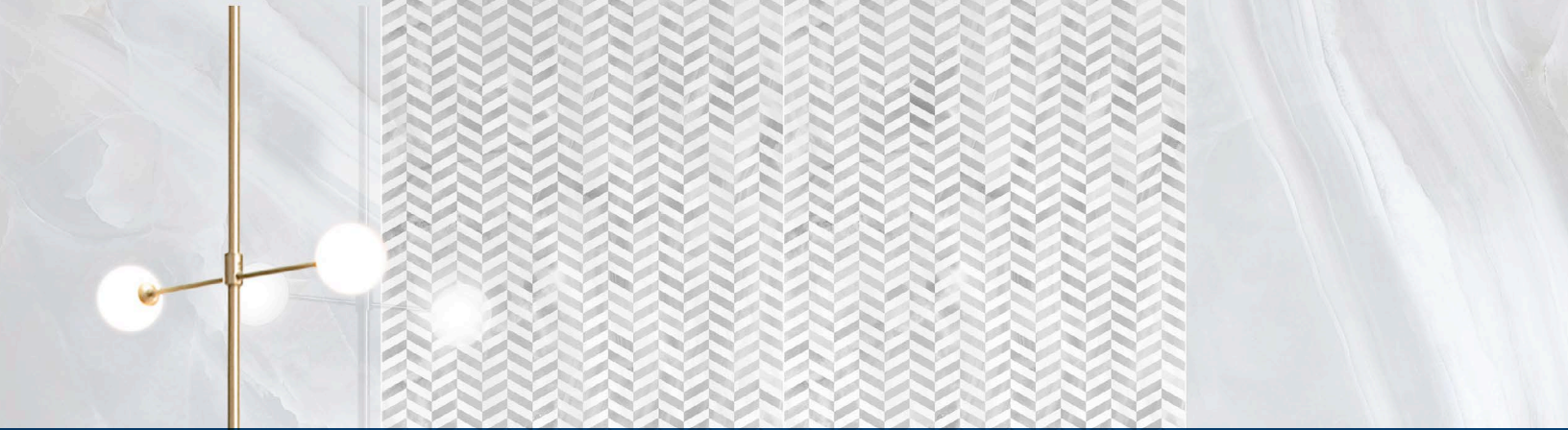
Polished

24" x 48" VN.NL.BIA.2448.PL



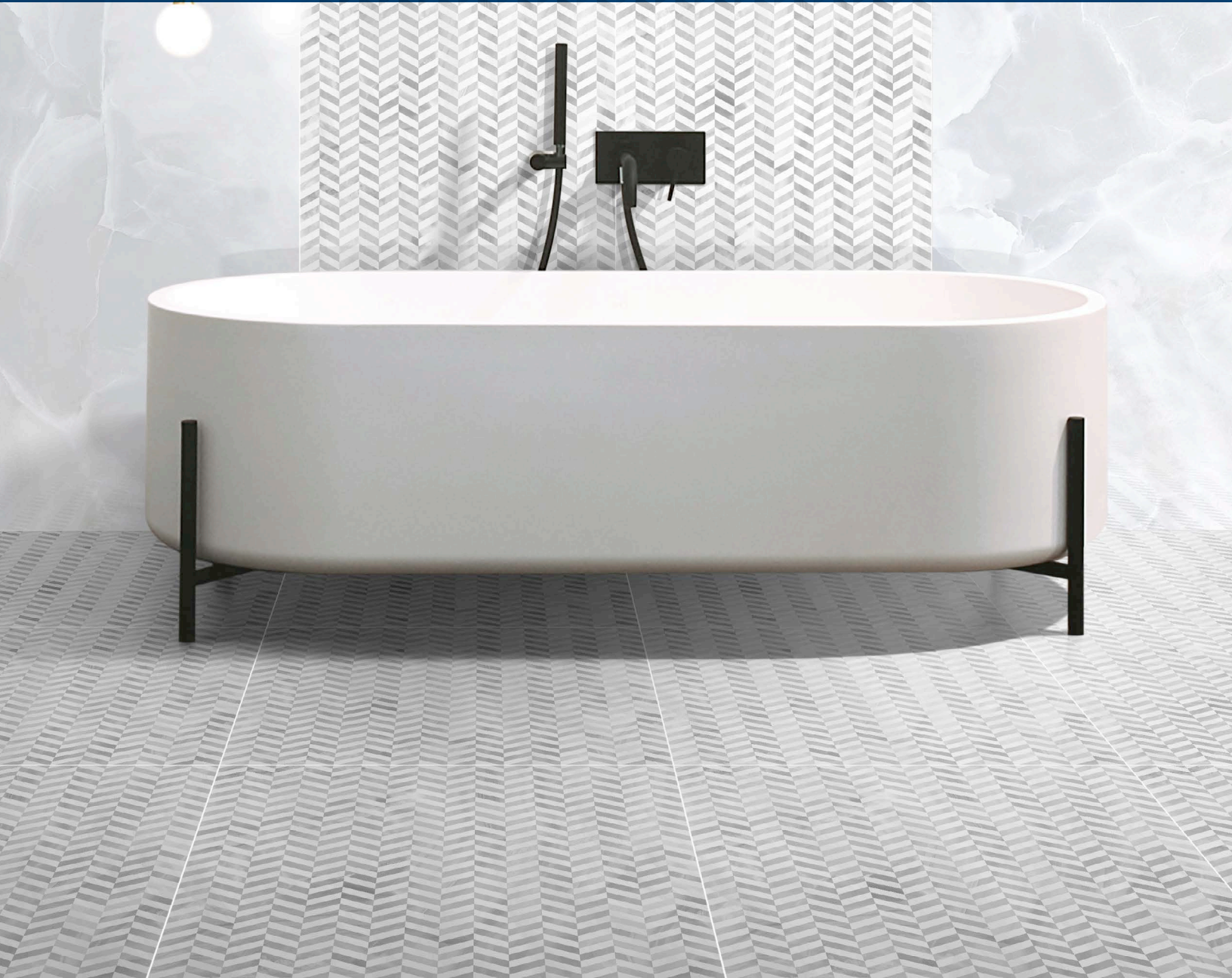
Not all items shown in this document are part of Alpha's stocking program and are pulled from Olympia Tile. For special orders, please contact your Alpha Tile Sales Representative.

alphatiles & stone 
a division of olympiatile+stone



BIANCO (White)
& SIMILA DECOR

alphatile & stone 
a division of olympiatile+stone



NOLITA Series

Colored Body Porcelain
Rectified

AMBRA (Cream)

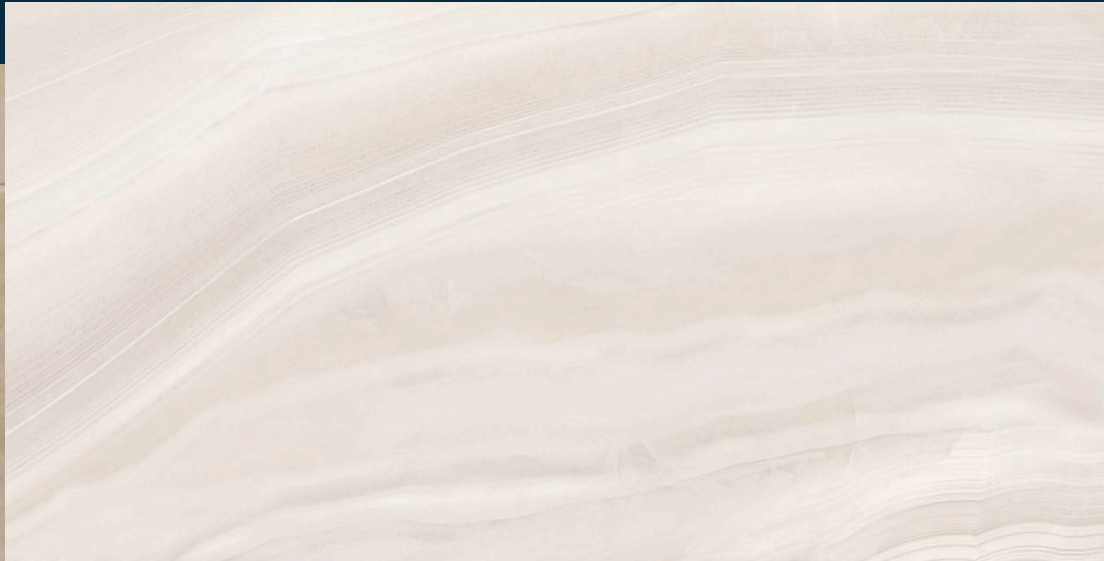
Honed

12" x 24" VN.NL.ABR.1224.HN

24" x 24" VN.NL.ABR.2424.HN

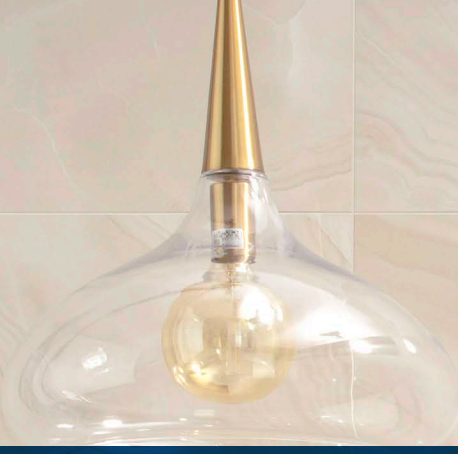
Polished

24" x 48" VN.NL.ABR.2448.PL



Not all items shown in this document are part of Alpha's stocking program and are pulled from Olympia Tile. For special orders, please contact your Alpha Tile Sales Representative.

alphatile & stone 
a division of olympiatile+stone



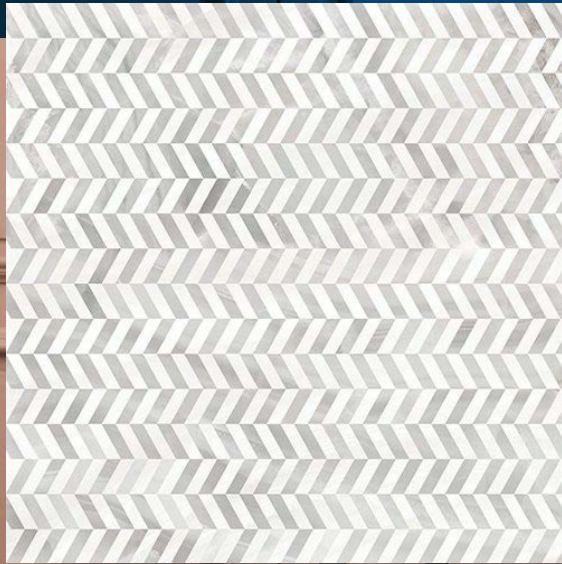
AMBRA (Cream)

alphatile & stone 
a division of olympiatile+stone



NOLITA Series

Colored Body Porcelain
Rectified
Honed



**SIMILA DECOR
BIANCO (White)**
24" x 24" VN.NL.BIA.2424.HN .DC

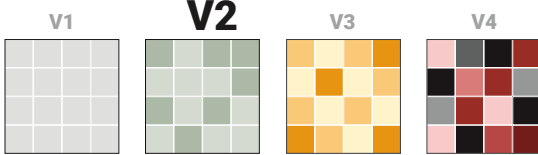


**MILANO DECOR
AMBRA (Cream)**
24" x 24" VN.NL.ABR.2424.HN .DC

Not all items shown in this document are part of Alpha's stocking program and are pulled from Olympia Tile. For special orders, please contact your Alpha Tile Sales Representative.

alphatiles & stone 
a division of olympiatile+stone

Color Variation



Member



Member of Canada
Green Building
Council



Member of U.S.
Green Building
Council



The Terrazzo, Tile, and
Marble Association of
Canada



Ceramic Tile
Distributors of
America (CTDA)



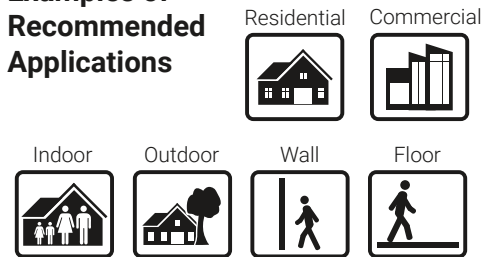
Marble Institute
of America

For information concerning LEED, please
contact our Sales Representative

Packing Details

TILE SIZE	PC/BOX	SF/BOX	LB/BOX	BOX/PAL
12" x 24" Honed	6	11.62	53.58	40
24" x 24" Honed - Tile & Decor	3	11.62	53.64	40
24" x 48" Polished	2	15.50	71.86	30

Examples of Recommended Applications



"MORE" Surface Care Product Guide

Task	Product Recommendation	Dilution with Water	Frequency
Grout Sealing	MORE™ Grout, Ceramic & Porcelain Sealer	Ready to use	Commercial: 1-3 Years Residential: 5-8 Years
Daily Maintenance	MORE™ Stone and Tile Cleaner	1 : 128 Ratio	Daily
Deep Cleaning	MORE™ Alkaline Cleaner	1 : 4 Ratio	As Needed
Grout Haze- Cementitious	MORE™ Acidic Cleaner	1 : 4 Ratio	As Needed
Grout Haze - Epoxy / Urethane	MORE™ Coating Stripper*	Ready to use	As Needed

*Always test in an inconspicuous area to make sure the product is achieving the desired results and is not damaging the finish of the surface.

alphatile & stone
a division of olympiatile+stone

Tampa

2443 East Meadow Blvd.
Tampa, FL 33619
(813) 620-9000
(800) 785-9000

Fort Myers

10898-A Metro Parkway
Ft. Myers, FL 33966
(239) 275-8288
(800) 785-8288

Sarasota

1808 Whitfield Ave.
Sarasota, FL 34243
(941) 727-7433
(800) 785-3484



www.alphatile.com