



# PALAIS Series

GLAZED PORCELAIN

# PALAIS- GLAZED PORCELAIN



WHITE  
12 x 24  
GE.PI.WHT.1224



BEIGE  
12 x 24  
GE.PI.BGE.1224



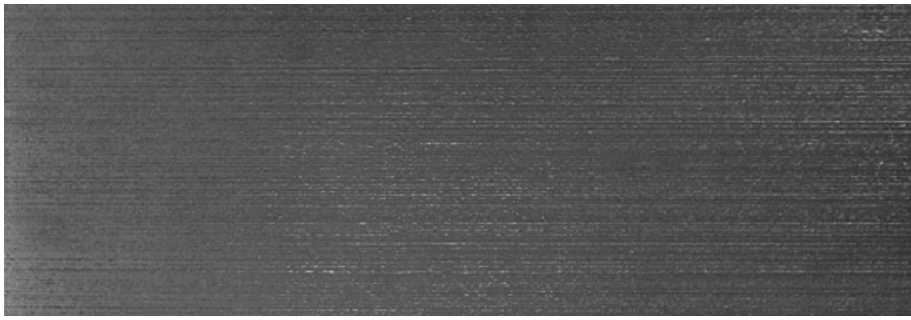
TAUPE  
12 x 24  
GE.PI.TPE.1224

All items shown in this document are not part of Alpha's stocking program, and are pulled from Olympia Tile. For special orders please contact your Alpha Tile Sales Representative

PALAIS- GLAZED PORCELAIN



GREY  
12 x 24  
GE.PI.GRY.1224



BLACK  
12 x 24  
GE.PI.BLK.1224

All items shown in this document are not part of Alpha's stocking program, and are pulled from Olympia Tile. For special orders please contact your Alpha Tile Sales Representative

## Packing Information

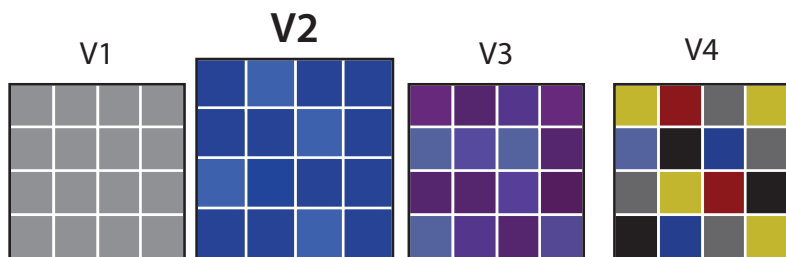
TILE SIZE	PC/BOX	SF/BOX	LB/BOX	BOX/PALLET
12" x 24"	6	11.64	54	40

## Test Performed -- Results Conform

<b>Slip Resistance</b>	DIN 51130/51097	R9	R9
	BCR	≤ 40 to ≤ 74	
<b>Bending / Breaking Strength</b>	ISO 10545-4	>1800N / >35N/mm <sup>2</sup> (porcelain) >1000N (monocottura)	1800N/45N/mm <sup>2</sup>
	ASTM C648	≥ 250 lbs	
<b>Deep Abrasion Resistance</b>	ISO 10545-8	≤ 175 mm <sup>3</sup>	
	ASTM C-1243		
<b>Chemical Resistance</b>	ISO 10545-13	≥ UB	
		GA / GLA	GAGLA
<b>Stain Resistance</b>	ISO 10545-14	> Class 3	5
<b>Front Resistance</b>	ISO 10545-12	n/a	Yes
	ASTM C-1028		
<b>PEI Rating</b>	ISO 10545-7	n/a	PEI 4;BLACK PEI 3
	ASTM C-1027		
<b>Scratch Hardness</b>	MOHs	n/a	MOHs 9
<b>Variation Rating</b>	n/a	n/a	V-2

Technical Data in provided by the manufacturer and is subject to change at any time. Olympia does not provide warranties as to the specifications of any product.

### Color Variation:



### Member:



### Recommended Uses:

